



SubBIOCODE Database

**web interface to facilitate access to data on subterranean biodiversity
in Southeastern Bosnia and Herzegovina**

Anja Kos, Matic Di Batista, Teo Delić, Maja Zagmajster

SubBioLab, Department of Biology, Biotechnical Faculty, University of Ljubljana, Slovenia
DiBa, Matic Di Batista s.p., Škofja Loka, Slovenia

Trebinje, 9 – 10. 4. 2022

Univerza v Ljubljani
Biotehniška fakulteta



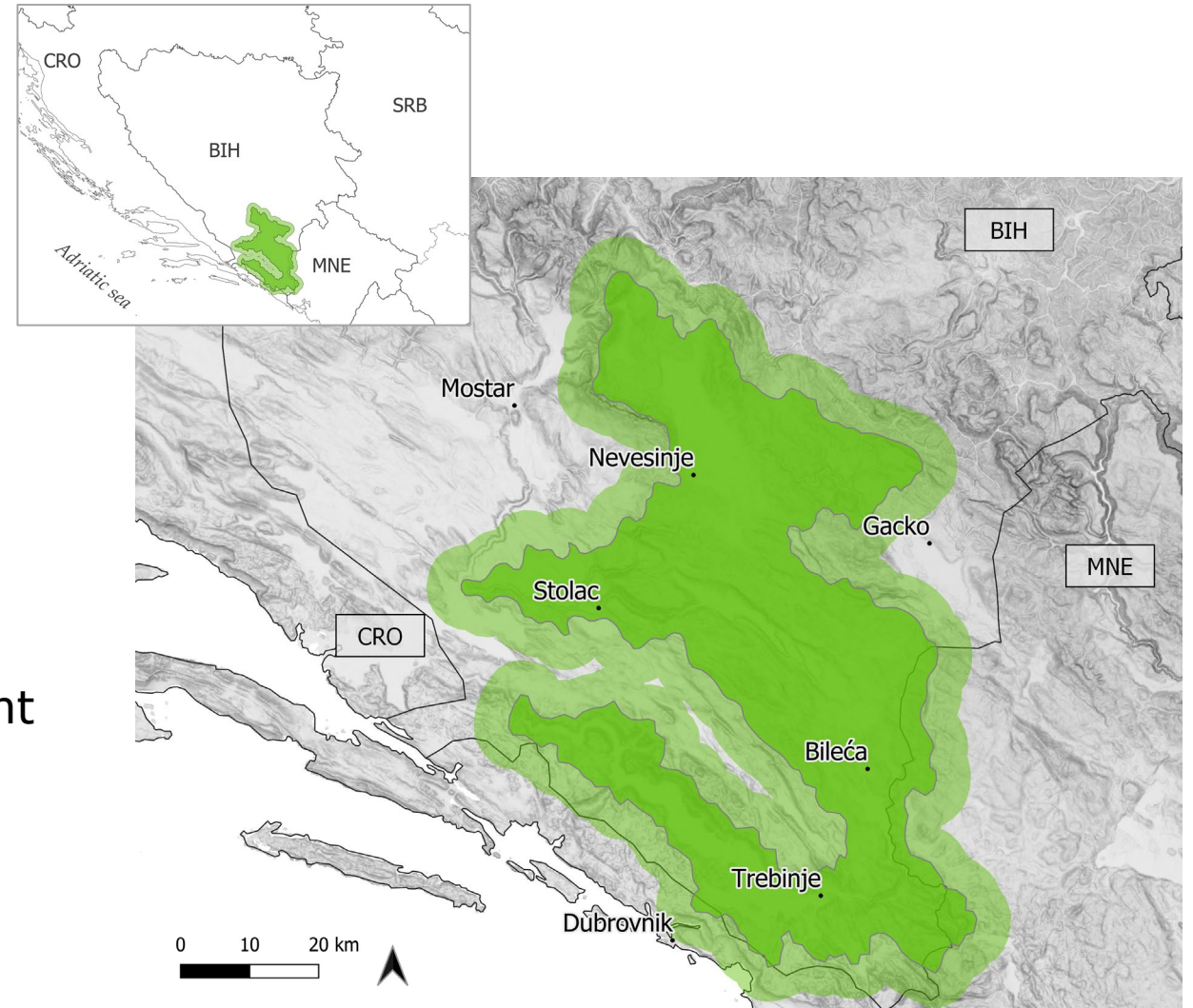
Background *of setting up the SubBIOCODE database*

Importance of data for adequate conservation measures

The data should be easily accessible, reliable, understandable

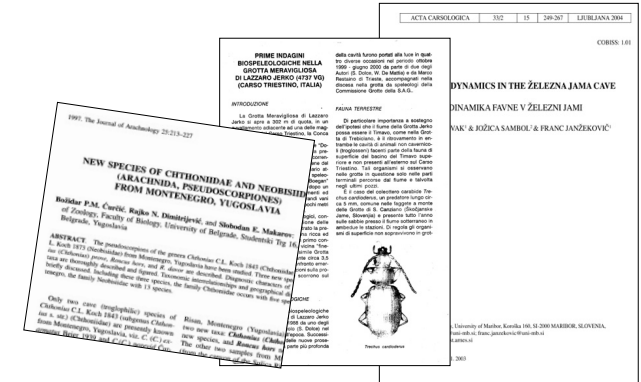
Part of the SubBIOCODE project goals

Target area: Southeastern Bosnia and Herzegovina – Trebišnjica river catchment



Development

Data preparation:
intensive revision of data,
inclusion of new literature data,
fieldwork excursions



Id	OriginalDetermination	NumberOfSeen	NumberOfTaken	IsAquatic	DeterminedBy	Notes	CollectionCode	CollectionNotes	CustomTaxon	LocusTypicus	TaxonId	SurveyId	LiteratureLastDate	OldId	CreatedBy
58...	9151	Proteus anguinus	NULL	NULL			NULL	NULL	Proteus ang...	0	5924	2418	NULL	14...	initial_im...
58...	9152	Proteus anguinus	NULL	NULL			NULL	NULL	Proteus ang...	0	5924	2167	NULL	14...	initial_im...
58...	9153	Proteus anguinus	NULL	NULL			NULL	NULL	Proteus ang...	0	5924	2417	NULL	14...	initial_im...
58...	9154	Proteus anguinus	NULL	NULL			NULL	NULL	Proteus ang...	0	5924	2416	NULL	14...	initial_im...
58...	9155	Proteus anguinus	NULL	NULL			NULL	NULL	Proteus ang...	0	5924	2415	NULL	14...	initial_im...
58...	9156	Proteus anguinus	NULL	NULL			NULL	NULL	Proteus ang...	0	5924	2422	NULL	14...	initial_im...
58...	9157	Proteus anguinus	NULL	NULL			NULL	NULL	Proteus ang...	0	5924	2414	NULL	14...	initial_im...
58...	9158	Proteus anguinus	NULL	NULL			NULL	NULL	Proteus ang...	0	5924	2412	NULL	14...	initial_im...
58...	9159	Proteus anguinus	NULL	NULL			NULL	NULL	Proteus ang...	0	5924	2411	NULL	14...	initial_im...
58...	9160	Proteus anguinus	NULL	NULL			NULL	NULL	Proteus ang...	0	5924	2389	NULL	14...	initial_im...
58...	9161	Proteus anguinus	NULL	NULL			NULL	NULL	Proteus ang...	0	5924	2408	NULL	14...	initial_im...
58...	9162	Proteus anguinus	NULL	NULL			NULL	NULL	Proteus ang...	0	5924	2388	NULL	14...	initial_im...
58...	9163	Proteus anguinus	NULL	NULL			NULL	NULL	Proteus ang...	0	5924	2366	NULL	14...	initial_im...
58...	9164	Proteus anguinus	NULL	NULL			NULL	NULL	Proteus ang...	0	5924	2364	NULL	14...	initial_im...
58...	9165	Proteus anguinus	NULL	NULL			NULL	NULL	Proteus ang...	0	5924	2363	NULL	14...	initial_im...
58...	9166	Proteus anguinus	NULL	NULL			NULL	NULL	Proteus ang...	0	5924	2362	NULL	14...	initial_im...
58...	9167	Proteus anguinus	NULL	NULL			NULL	NULL	Proteus ang...	0	5924	2413	NULL	14...	initial_im...
58...	9168	Proteus anguinus	NULL	NULL			NULL	NULL	Proteus ang...	0	5924	2637	NULL	14...	initial_im...
58...	9169	Proteus anguinus	NULL	NULL			NULL	NULL	Proteus ang...	0	5924	2620	NULL	14...	initial_im...
58...	9170	Proteus anguinus	NULL	NULL			NULL	NULL	Proteus ang...	0	5924	2638	NULL	14...	initial_im...

Development

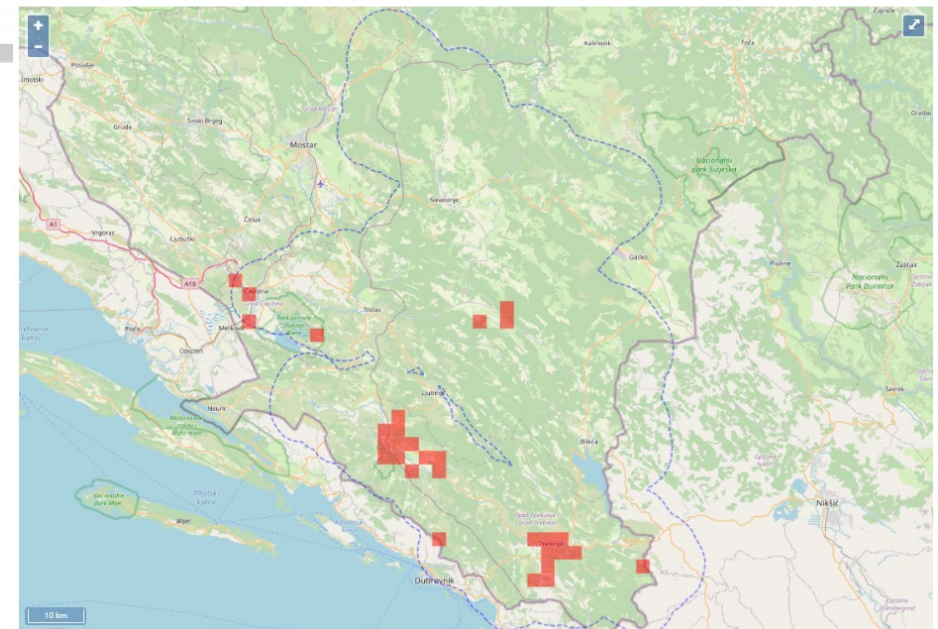
Building user interface:
data workflow,
website structure,
visual appearance

100 %

Results Messages

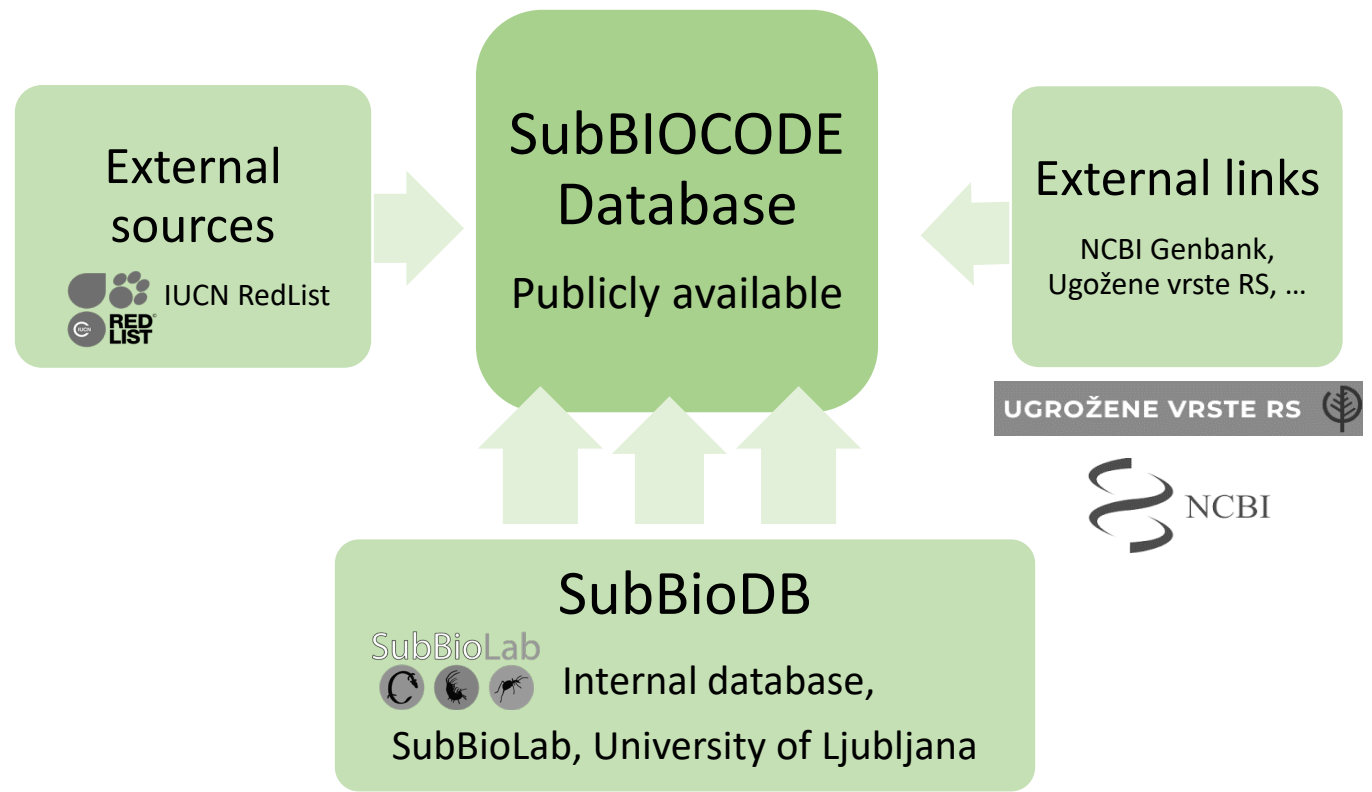
Id	OriginalDetermination	NumberOfSeen	NumberOfTaken	IsAquatic	DeterminedBy	Notes	CollectionCode	CollectionNotes	CustomTaxon	LocusTypicus	TaxonId	SurveyId	LiteratureLastDate	OldId	CreatedBy
58...	9151	Proteus anguinus	NULL	NULL			NULL	NULL	Proteus ang...	0	5924	2418	NULL	14...	initial_im...
58...	9152	Proteus anguinus	NULL	NULL			NULL	NULL	Proteus ang...	0	5924	2167	NULL	14...	initial_im...
58...	9153	Proteus anguinus	NULL	NULL			NULL	NULL	Proteus ang...	0	5924	2417	NULL	14...	initial_im...
58...	9154	Proteus anguinus	NULL	NULL			NULL	NULL	Proteus ang...	0	5924	2416	NULL	14...	initial_im...
58...	9155	Proteus anguinus	NULL	NULL			NULL	NULL	Proteus ang...	0	5924	2415	NULL	14...	initial_im...
58...	9156	Proteus anguinus	NULL	NULL			NULL	NULL	Proteus ang...	0	5924	2422	NULL	14...	initial_im...
58...	9157	Proteus anguinus	NULL	NULL			NULL	NULL	Proteus ang...	0	5924	2414	NULL	14...	initial_im...
58...	9158	Proteus anguinus	NULL	NULL			NULL	NULL	Proteus ang...	0	5924	2412	NULL	14...	initial_im...
58...	9159	Proteus anguinus	NULL	NULL			NULL	NULL	Proteus ang...	0	5924	2411	NULL	14...	initial_im...
58...	9160	Proteus anguinus	NULL	NULL			NULL	NULL	Proteus ang...	0	5924	2389	NULL	14...	initial_im...
58...	9161	Proteus anguinus	NULL	NULL			NULL	NULL	Proteus ang...	0	5924	2408	NULL	14...	initial_im...
58...	9162	Proteus anguinus	NULL	NULL			NULL	NULL	Proteus ang...	0	5924	2388	NULL	14...	initial_im...
58...	9163	Proteus anguinus	NULL	NULL			NULL	NULL	Proteus ang...	0	5924	2366	NULL	14...	initial_im...
58...	9164	Proteus anguinus	NULL	NULL			NULL	NULL	Proteus ang...	0	5924	2364	NULL	14...	initial_im...
58...	9165	Proteus anguinus	NULL	NULL			NULL	NULL	Proteus ang...	0	5924	2364	NULL	14...	initial_im...
58...	9166	Proteus anguinus	NULL	NULL			NULL	NULL	Proteus ang...	0	5924	2364	NULL	14...	initial_im...
58...	9167	Proteus anguinus	NULL	NULL			NULL	NULL	Proteus ang...	0	5924	2364	NULL	14...	initial_im...
58...	9168	Proteus anguinus	NULL	NULL			NULL	NULL	Proteus ang...	0	5924	2364	NULL	14...	initial_im...
58...	9169	Proteus anguinus	NULL	NULL			NULL	NULL	Proteus ang...	0	5924	2364	NULL	14...	initial_im...
58...	9170	Proteus anguinus	NULL	NULL			NULL	NULL	Proteus ang...	0	5924	2364	NULL	14...	initial_im...

Proteus anguinus Laurenti, 1768



Development

Building user interface:
data workflow,
website structure,
visual appearance



SubBIOCODE Database

Exploring the diversity of subterranean life

Case 1: Locality

Added photographs

Registered users: exact location

Case 2: Taxon

DNA sequences

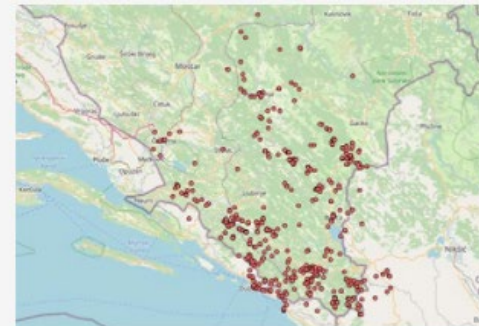
IUCN Red List category



607 locations



859 taxa



5710 occurrence records



22 DNA sequences

Usage

Pre-fieldwork preparation

Spatial planning in the area

Research of the diversity patterns

Contributing information



Challenges

Post-project existence of the database

There is no perfect dataset

Opportunities

Research and conservation

Enhancement of collaboration

Lessons learned – guidance for other projects

Broadening the scope of the database

Sub BIO



CODE

